

Loading software files that have been zipped onto a USB drive.

NOTE: This software can ONLY be loaded to a USB drive through a PC or laptop. It can NOT be loaded through a tablet.

1. Open the email with the zipped software files or download it from the website (see Figure 1).

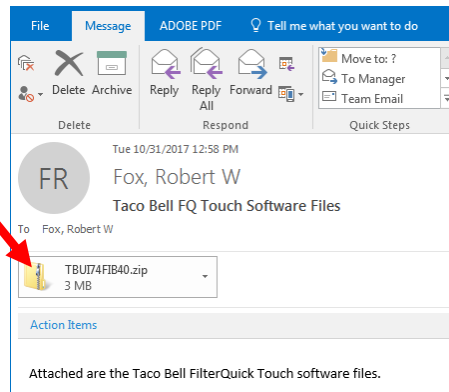


Figure 1

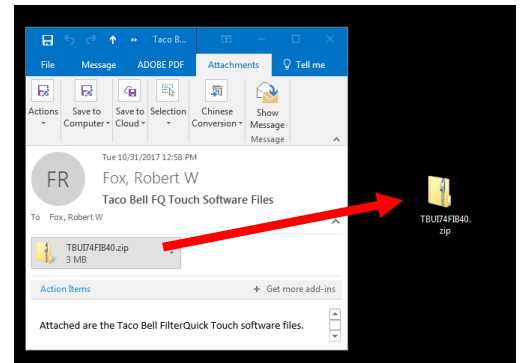


Figure 2

2. Click on the attached file and drag it onto the desktop of the computer (see Figure 2).
3. Double click and open the zipped folder (see Figure 3).
4. Insert a blank USB drive at least 128MB into the computer. Ensure it is formatted for FAT 32. If using an old drive, delete the files first.

Name	Type	Compressed size	Password ...	Size	Ratio
MENU.cbr	CBR File	78 KB	No	165 KB	54%
MidRange.bin	BIN File	1,544 KB	No	8,113 KB	81%
TBFIBimg.bin	BIN File	211 KB	No	836 KB	75%
TBUIBimg.bin	BIN File	1,544 KB	No	8,113 KB	81%

Figure 3



Figure 4

5. Double click and open the zipped folder (see Figure 3).
6. Insert a blank USB drive at least 128MB into the computer. Ensure it is formatted for FAT 32. If using an old drive, delete the files first.
7. Open the USB drive directory by clicking on start button in the lower left corner of the screen (see Figure 4).

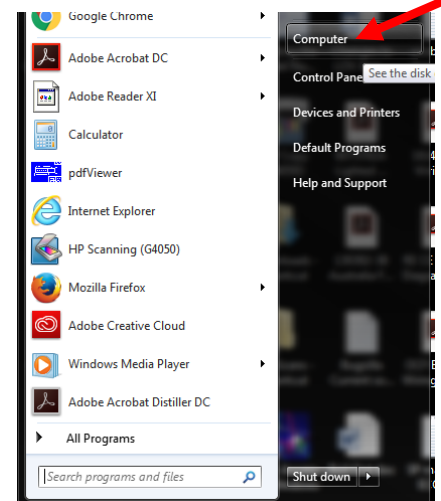


Figure 5

6. Click on Computer (see Figure 5).
7. Locate the blank USB drive in the directory (see Figure 6).

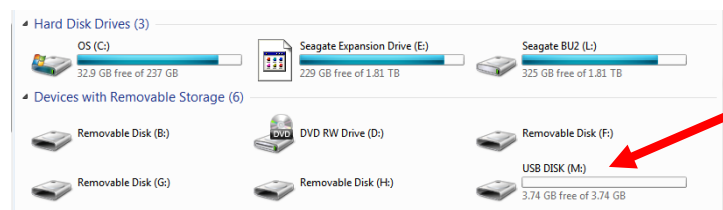


Figure 6

8. Double click on the USB drive to view the blank directory (see Figure 7).

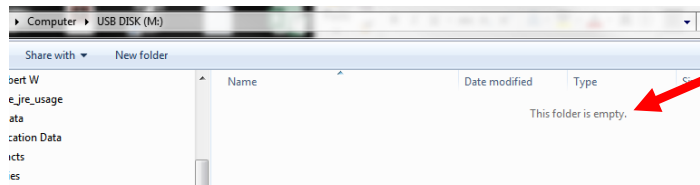


Figure 7

9. While holding down the SHIFT key, left click on the 1st and last file in the zip folder to highlight the files (see Figure 8).

Name	Type	Compressed size	Password ...	Size	Ratio
MENU.cbr	CBR File	78 KB	No	165 KB	54%
MidRange.bin	BIN File	1,544 KB	No	8,113 KB	81%
TBFIBimg.bin	BIN File	211 KB	No	836 KB	75%
TBUIBimg.bin	BIN File	1,544 KB	No	8,113 KB	81%

Figure 8

10. With the files highlighted, click and drag the files into the blank USB directory. The files will show up in the USB directory (see Figure 9).

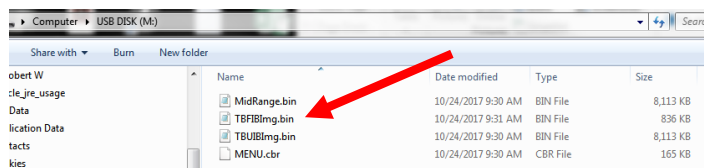


Figure 9

11. Remove the USB drive and follow the software update instructions to load the software and menus on the fryer.

12. If you have any questions, do not understand any of the steps, or have other issues call 1-800-551-8633.

13. **Ensure the USB drive is marked in a way to ensure the latest software is loaded.**