

Instruction Sheet

Subject: Taco Bell Software Update

Models affected: Taco Bell FQ4000 Touch Fryers

1. This software update addresses some critical issues in the Taco Bell FilterQuick fryers with FQ4000 controllers.
2. Please quickly schedule service calls with any Taco Bells in your area that have the new FilterQuick fryers with FQ4000 controllers.
3. This software can **ONLY** be loaded to a USB drive through a PC or laptop. It can **NOT** be loaded through a tablet.
4. The software is in a zipped compressed folder and must be unzipped prior to loading to the USB drive. Instructions are included. If you have any questions, do not understand any of the steps, or have other issues call 1-800-551-8633. If you need the software shipped on a USB drive call the toll-free number to request one.
5. Use a USB drive of 128mb or larger. **Ensure the USB drives are marked in a way to ensure the latest software is loaded. If reusing a drive delete the old software first.**
6. The software update instructions are included to update the fryers.
7. **IT IS CRITICAL TO WAIT 5 MINUTES AFTER LOADING THE SOFTWARE BEFORE POWER CYCLING THE FRYER. FAILURE TO WAIT, MAY CORRUPT THE MEMORY AND RENDER THE CONTROLLER INOPERABLE.**
8. **IT IS CRITICAL THAT WHEN UPDATING THE SOFTWARE, THE MENU FILES NEED TO BE UPDATED WITH THIS VERSION. INSTRUCTIONS ARE INCLUDED ON THE SOFTWARE UPDATE INSTRUCTIONS.**
9. There is an additional screen that the operators may encounter if the oil is not adequately returned to the vat (see Figure 1).
10. Please communicate this to the store management and any operators.
11. Some additional training may be necessary to help the store know how to assemble the filter pan components; cleaning the pre-filter and ensuring that it is tightened with the wrench. Hand tightening will allow air into the lines which may cause slow oil return and filter errors.
12. Follow the software update instructions attached.
13. Please leave a set of the Taco Bell Store Instructions with each location updated.
14. The software has a new SAFE MODE. This is to ensure the fryer doesn't heat if not enough oil is in the vat. If the stores get into the safe mode error twice in a row (Error E81), the fryer will lock out. Once it is determined that the filter pan is empty and the vat is full of oil, **the tech will need to enter a code 4357 (HELP) to unlock** (see Figure 2) to allow the fryer to heat.



Figure 1



Figure 2

Loading software files that have been zipped onto a USB drive.

NOTE: This software can ONLY be loaded to a USB drive through a PC or laptop. It can NOT be loaded through a tablet.

1. Open the email with the zipped software files or download it from the website (see Figure 1).

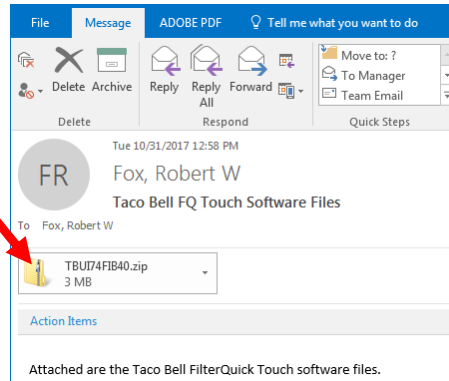


Figure 1

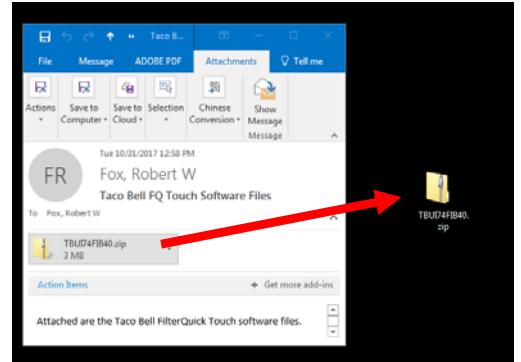


Figure 2

2. Click on the attached file and drag it onto the desktop of the computer (see Figure 2).

Name	Type	Compressed size	Password ...	Size	Ratio
MENU.cbr	CBR File	78 KB	No	165 KB	54%
MidRange.bin	BIN File	1,544 KB	No	8,113 KB	81%
TBFIBimg.bin	BIN File	211 KB	No	836 KB	75%
TBUIBimg.bin	BIN File	1,544 KB	No	8,113 KB	81%

Figure 3

3. Double click and open the zipped folder (see Figure 3).



Figure 4

4. Insert a blank USB drive at least 128MB into the computer. Ensure it is formatted for FAT 32. If using an old drive, delete the files first.

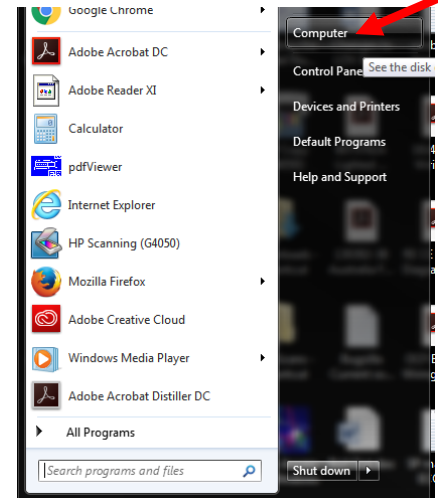


Figure 5

5. Open the USB drive directory by clicking on start button in the lower left corner of the screen (see Figure 4).

6. Click on Computer (see Figure 5).

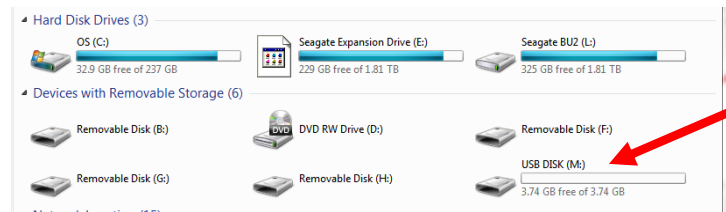


Figure 6

7. Locate the blank USB drive in the directory (see Figure 6).

8. Double click on the USB drive to view the blank directory (see Figure 7).

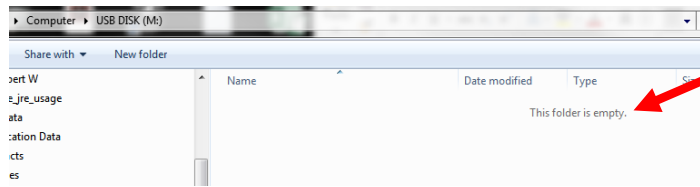


Figure 7

9. While holding down the SHIFT key, left click on the 1st and last file in the zip folder to highlight the files (see Figure 8).

A screenshot of a Windows File Explorer window showing a list of files in a zip folder. The files are: MENU.cbr (CBR File, 78 KB, No password, 165 KB, 54%), MidRange.bin (BIN File, 1,544 KB, No password, 8,113 KB, 81%), TBFBIImg.bin (BIN File, 211 KB, No password, 836 KB, 75%), and TBUIBImg.bin (BIN File, 1,544 KB, No password, 8,113 KB, 81%). A red arrow points to the first and last files.

Name	Type	Compressed size	Password ...	Size	Ratio
MENU.cbr	CBR File	78 KB	No	165 KB	54%
MidRange.bin	BIN File	1,544 KB	No	8,113 KB	81%
TBFBIImg.bin	BIN File	211 KB	No	836 KB	75%
TBUIBImg.bin	BIN File	1,544 KB	No	8,113 KB	81%

Figure 8

10. With the files highlighted, click and drag the files into the blank USB directory. The files will show up in the USB directory (see Figure 9).

A screenshot of a Windows File Explorer window titled "Computer > USB DISK (M:)". The window shows the files from the zip folder copied into the USB drive directory: MidRange.bin (8,113 KB), TBFBIImg.bin (836 KB), TBUIBImg.bin (8,113 KB), and MENU.cbr (165 KB). A red arrow points to the first file, MidRange.bin.

Name	Date modified	Type	Size
MidRange.bin	10/24/2017 9:30 AM	BIN File	8,113 KB
TBFBIImg.bin	10/24/2017 9:31 AM	BIN File	836 KB
TBUIBImg.bin	10/24/2017 9:30 AM	BIN File	8,113 KB
MENU.cbr	10/24/2017 9:30 AM	CBR File	165 KB

Figure 9

11. Remove the USB drive and follow the software update instructions to load the software and menus on the fryer.

12. If you have any questions, do not understand any of the steps, or have other issues call 1-800-551-8633. If you need the software shipped on a USB drive call the toll-free number to request one.

13. **Ensure the USB drive is marked in a way to ensure the latest software is loaded.**

FilterQuick Touch Software Update Instructions

To update the software, follow the attached instructions. If you have any problems or questions call Frymaster at 1-800-551-8633.

Loading Software from a USB drive

Updating the software takes approximately **30** minutes for the entire fryer. Ensure the store has enough product cooked before updating the fryers.

- Check with the manager **PRIOR** to a software about any LTO's (Limited Time Offer) products that may have been programmed into the controllers. If so capture the product details such as product name, cook time, etc. to program in later.
- After updating the software, the menu file **MUST** be updated with this version.
- The following reset must be performed to clear items before updating.
 1. Pull the filter pan slightly out of the fryer.
 2. Press the HOME button.
 3. Press the SERVICE button.
 4. Press the SERVICE button again.
 5. Enter 3000.
 6. Press the down arrow button.
 7. Press the FIB-RESET 2 button.
 8. Press YES to confirm.
 9. Press the check button.
 10. Press the home button.
- The software only needs to be loaded in the USB port in the far-left fryer cabinet and it will update **all** the controllers and boards in the system.

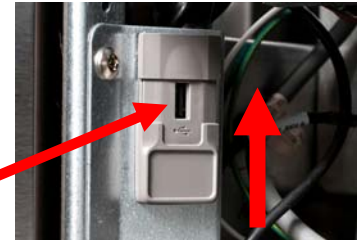


Figure 1

To update the software, follow these steps carefully:

1. Switch all controllers to **OFF**. Press the home button then the information (?) button; press the down arrow; press the SW version button. The controller displays INTIALIZING. Write down the current (UIB, SIB, VIB and FIB) software versions.
2. On the **far-LEFT** controller press the HOME button.
3. Press the SERVICE button.
4. Press the SERVICE button again.
5. Enter 3000 for and press the checkmark button.
6. Press the TECH MODES button.
7. Press the down arrow.
8. Press the SOFTWARE UPGRADE button.
9. Controller displays INSERT USB.
10. Open the far-left cabinet door and slide the USB cover up (see Figure 1).
11. Insert the USB flash drive (see Figure 2).
12. The controller displays IS USB INSERTED? YES NO
13. Press the YES button after the USB flash drive is inserted.
14. Controller displays READING FILE FROM USB. PLEASE DO NOT REMOVE USB WHILE READING.
15. Controller displays READING COMPLETED, PLEASE REMOVE USB.
16. Remove the USB flash drive and lower cover over the USB slot.
17. Press the YES button after the USB flash drive is removed.
18. Controller displays CONFIRM CONTROLLERS AVAILABLE FOR UPGRADE UIB, SIB, VIB AND FIB.
19. Press the YES button to continue or NO to exit.
20. Controller displays UIB, SIB, VIB, FIB – DATA TRANSFER IN PROGRESS, WILL

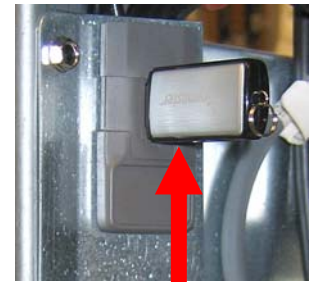


Figure 2



Figure 3

COMPLETE IN X MINUTES for each board.

21. Controller displays UIB, SIB, VIB, FIB – UPGRADE IN PROGRESS, WILL COMPLETE IN X MINUTES for each board.
22. When the software update is complete, each controller will display UPGRADE COMPLETE? YES.
23. Press the YES button.
24. The controller displays UPGRADE COMPLETED, POWER CYCLE THE SYSTEM. **WAIT 5 MINUTES BEFORE POWER CYCLING THE FRYER TO ALLOW FOR THE SOFTWARE TO PROPERLY LOAD. FAILURE TO WAIT, MAY CORRUPT THE MEMORY AND RENDER THE CONTROLLER INOPERABLE.**
25. Cycle the fryer control power using the reset switch or unplug the fryer. In some models, this is located under the USB slot (see Figure 3). In some gas models, the momentary rocker switch (see Figure 4) is located under the far-left control box (see Figure 5). In some electric models, the momentary rocker switch is located directly behind the JIB reset switch (see Figure 6). **ENSURE THE SWITCH IS PRESSED AND HELD FOR 60 SECONDS.**
26. While the fryer is rebooting some controllers may take up to 10 minutes to reboot as the software is loading.
27. Once all controllers have returned to the power standby switch, go to the next step.
28. **VERIFY** software update by pressing the home button, then press the information (?) button; press the down arrow; press the Software Version button. The controller displays INTIALIZING. **Ensure that the UIB, SIB, VIB, FIB software versions have updated to the versions below.**

Following the software update Taco Bell Software Versions should be: **UIB: 20.00.137, SIB: 04.00.000, VIB: 1.01.000 and FIB: 20.00.053.**

29. Press the home button. - Press the CREW MODE button.
30. The software update is complete.
31. **The menu file MUST be updated with this software update. Follow the steps below to update the menu file.**

Reprogram any Limited Time Offer (LTO's) in the controllers that may have been overwritten during the update.

Follow the steps below to update the Menu file.

NOTE: This will overwrite any current product menu items and their settings. This may require reentering any limited time offering products cook times, temperatures, etc. and reassigning products to their locations on the touch screen controller.

1. Switch all controllers to **OFF**.
2. Press the HOME button.
3. Press the SERVICE button.
4. Press the MANAGER button.
5. Enter 1656.
6. Press the check button.

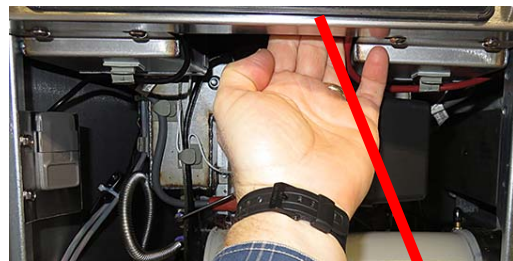


Figure 5

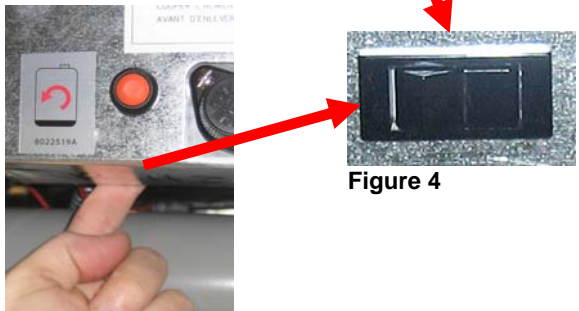


Figure 6



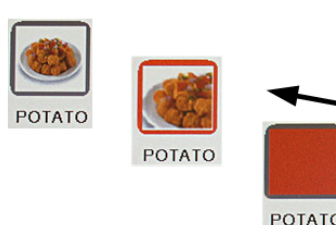
Figure 4

7. Press the USB – MENU OPERATION button.
8. Press the COPY MENU FROM USB TO FRYER button.
9. The controller displays INSERT USB.
10. Open the far-left cabinet door and slide the USB cover up (see Figure 1).
11. Insert the USB flash drive (see Figure 2).
12. The controller displays IS USB INSERTED? YES NO
13. Press the YES button after the USB flash drive is inserted.
14. Controller displays READING FILE FROM USB. PLEASE DO NOT REMOVE USB WHILE READING.
15. Controller displays UI – UI DATA TRANSFER IN PROGRESS changing to MENU UPGRADE IN PROCESS.
16. Controller displays UPGRADE COMPLETE?
17. Press YES
18. Controller displays MENU UPGRADE COMPLETED, REMOVE THE USB AND RESTART THE ENTIRE BATTERY.
19. Remove the USB flash drive and lower cover over the USB slot.
20. Press the YES button after the USB flash drive is removed.
21. Cycle the fryer control power using the reset switch. In some models, this is located under the USB slot (see Figure 3). In some gas models, the momentary rocker switch (see Figure 4) is located under the far-left control box (see Figure 5). In some electric models, the momentary rocker switch is located directly behind the JIB reset switch (see Figure 6). **ENSURE THE SWITCH IS PRESSED AND HELD FOR 60 SECONDS.**
22. Products may need reassigned to their locations and any limited time offerings products may need to be reentered into each controller.
23. On the last page are factory default locations for Left and Right Screen product assignment positions. This may need adjusted with limited time offerings. Check with store manager for any desired changes.

Taco Bell


Left/Right Screen Default Factory Product Positions

Follow the instructions below to assign product locations. The controllers must be ON displaying the products.



Changing a Product

Press and hold the product button to change. The outline of the button changes from green to red and then to solid red. Select and press the new product button.



The left/right screen default products are shown on the following page.

LEFT SCREEN



RIGHT SCREEN:

