

Loading software files that have been zipped onto a USB drive.

1. Open the email with the zipped software files (see Figure 1).

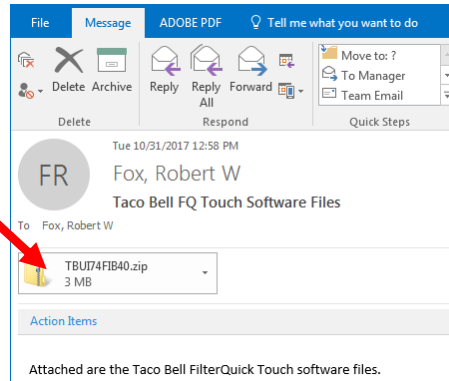


Figure 1

2. Click on the attached file and drag it onto the desktop of the computer (see Figure 2).

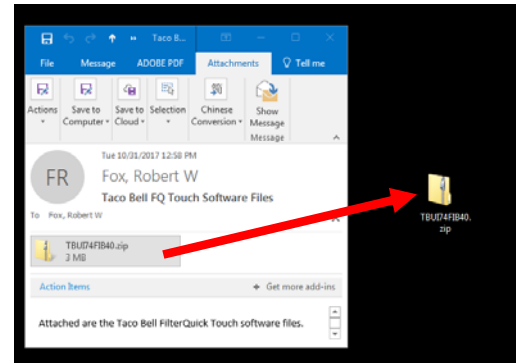


Figure 2

3. Double click and open the zipped folder (see Figure 3).

Name	Type	Compressed size	Password ...	Size	Ratio
MENU.cbr	CBR File	78 KB	No	165 KB	54%
MidRange.bin	BIN File	1,544 KB	No	8,113 KB	81%
TBFIBImg.bin	BIN File	211 KB	No	836 KB	75%
TBUIBImg.bin	BIN File	1,544 KB	No	8,113 KB	81%

Figure 3

4. Insert a blank USB drive at least 128MB into the computer. Ensure it is formatted for FAT 32. If using an old drive, delete the files first.



Figure 4

5. Open the USB drive directory by clicking on start button in the lower left corner of the screen (see Figure 4).

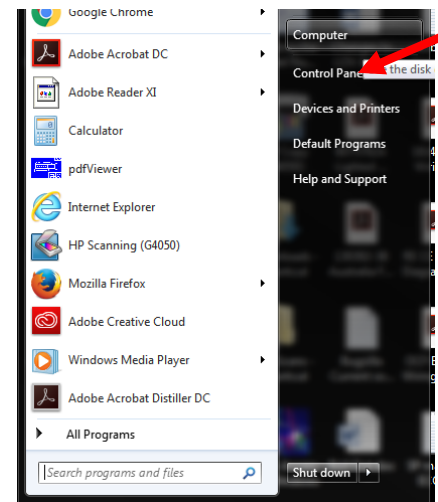


Figure 5

6. Click on Computer (see Figure 5).

7. Locate the blank USB drive in the directory (see Figure 6).

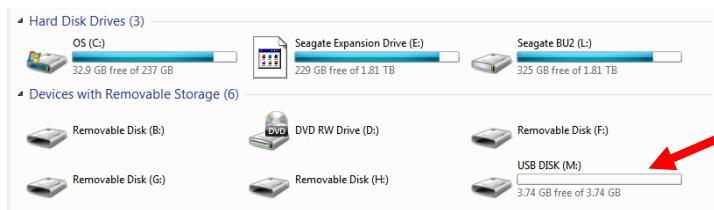


Figure 6

8. Double click on the USB drive to view the blank directory (see Figure 7).

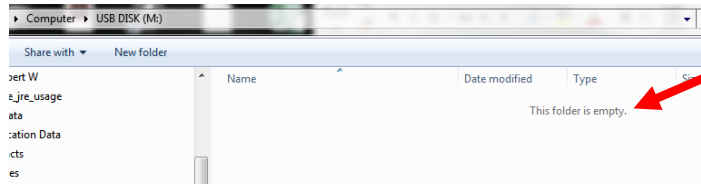
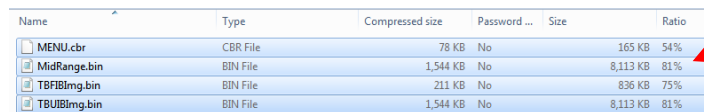


Figure 7

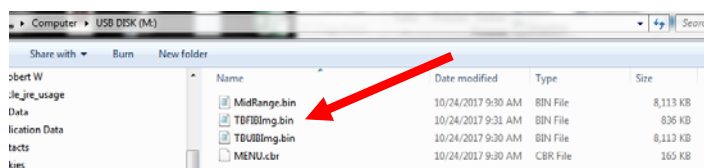
9. While holding down the SHIFT key, left click on the 1st and last file in the zip folder to highlight the files (see Figure 8).

A screenshot of a Windows File Explorer window showing a list of files. The first and last files are highlighted. A red arrow points to the last file.

Name	Type	Compressed size	Password ...	Size	Ratio
MENU.cbr	CBR File	78 KB	No	165 KB	54%
MidRange.bin	BIN File	1,544 KB	No	8,113 KB	81%
TBFIBimg.bin	BIN File	211 KB	No	836 KB	75%
TBUIBimg.bin	BIN File	1,544 KB	No	8,113 KB	81%

Figure 8

10. With the files highlighted, click and drag the files into the blank USB directory. The files will show up in the USB directory (see Figure 9).

A screenshot of a Windows File Explorer window showing the files from Figure 8 now in the USB drive directory. A red arrow points to the first file.

Name	Date modified	Type	Size
MidRange.bin	10/24/2017 9:30 AM	BIN File	8,113 KB
TBFIBimg.bin	10/24/2017 9:31 AM	BIN File	836 KB
TBUIBimg.bin	10/24/2017 9:30 AM	BIN File	8,113 KB
MENU.cbr	10/24/2017 9:30 AM	CBR File	165 KB

Figure 9

11. Remove the USB drive and follow the software update instructions to load the software and menus on the fryer.

12. **Ensure the USB drive is marked in a way to ensure the latest software is loaded.**